

Part 3

USING C-CELL

SAMPLE SELECTION

The decision on numbers of individual slices to be assessed for a particular product depends on the circumstances of the test. It is common for the cell structure of bakery products to vary along their length, due to its mechanical processing and the method of baking (tinned/lidded etc). This is especially true for bread and other fermented products which undergo moulding before the dough is placed in the pan.

It is important to have a standard sampling method specific to the type of product in order to gain maximum value from C-Cell data. Data from single or multiple slices from the same product may be taken. If more than one product is available from a given batch, then data may be collected from multiple products per test (e.g. 2-6) and multiple numbers of slices per product (e.g. 4-8) and then averaged using spread sheets

Examples;

Single piece pan breads

- The most common approach is to take a single slice at the approximate centre of each sample. More than one product should be examined where possible.
- There is some variation along the length of a single piece loaf which comes from the moulding pattern. An alternative strategy would be to sample a single product at distances of say 25, 50 and 75% of the pan length.

Multi-piece pan breads, and twisted dough breads

- There is generally a cyclical variation in the cell structure of multi-piece pan breads. Comparisons between products should be made at the same point along the length of the loaf.
- Suggested locations would be in the centre of one or more of the multi pieces and/or at the join of the two pieces.
- Twisted dough breads should be sampled at 2 or 3 standard positions along the length of the loaf.
- If possible, more than one loaf should be sampled to provide information on between sample variability.

Hearth-type breads

- There is greater inherent variability in such products. Measurements at several points along the length of the product are recommended, e.g. two, at 33 and 66% length, or three at 25, 50 and 75% lengths.

- Slices which incorporate areas with cuts or marks on the crust will result in greater variability in the data.
- To avoid unwanted effects from variations in slice area cell data should be normalised.
-

Rolls, buns, hamburger buns

- Round or cylindrical products may be sampled in vertical or horizontal cross section.
- If possible, more than one sample should be tested to provide information on between sample variability.

Cakes

- Cakes with a rectangular cross-section and round sponges and small unit cakes are commonly sliced vertically near to the geometric centre of the product.
- Multiple samples along the length of a rectangular cross-section cake are recommended, see **Pan breads**.
- Multiple sections may be taken from round cakes but normalising of the cell data must be undertaken to provide meaningful averages.
- If possible, more than one sample should be tested to provide information on between sample variability.

Pizza bases

- Slice vertically, taking a 12mm strip, and attach to tray with Blue Tack
 - If possible, more than one sample should be tested to provide information on between sample variability.

Laminated products

- Slice vertically.
 - If possible, more than one sample should be tested to provide information on between sample variability

SAMPLE PREPARATION

Note

Commercially sliced bread will always have a more “uneven” surface appearance when compared to the “perfectly” sliced product due to the constraints of slicing freshly baked bread in a commercial bakery (product temperature and blade sharpness). Analysing the same product prepared on a commercial slicer and a sharp blade slicer (such as Graef Master M 20) will typically produce 12 – 15% more cells for the laboratory sliced product.

This is due to the much smoother surface texture of the laboratory sliced product, which has been cut with a sharp blade producing no tear marks in the product surface, which allows the software to identify more accurately the cell and cell wall divide.

Commercial sliced bread

- No preparation required. Ensure slices are removed from same location each time.

Laboratory sliced bread

- Sharp knife with guide
- Pilot plant commercial slicer
- For laboratory preparation, we recommend a fine-toothed slicer similar to:
https://www.amazon.co.uk/gp/product/B00NIO9T80/ref=oh_aui_detailpage_o05_s00?ie=UTF8&psc=1

The cleaner the surface cut then more reproducible the results will be.

Variations due to sample preparation are the greatest source of error when comparing results

Rolls / Cakes / Pizza base

- As for Laboratory sliced

Note - *For very soft samples try part freezing the sample before slicing.*

CALIBRATION

Monochrome C-Cell

- Follow the manufactures instructions, using the single greyscale Munsell card.

Colour C-Cell

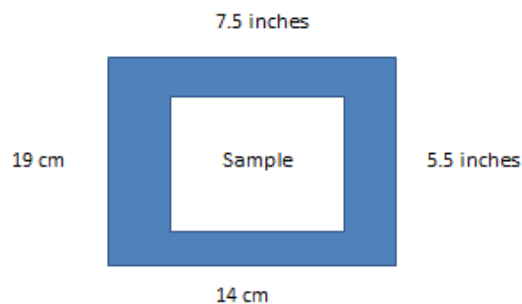
- Follow the manufactures instructions, using the 2-stage greyscale Munsell and Ramp card.

FIELD OF VIEW / SAMPLE SIZE / ORIENTATION

- The filed of view is 7.5" x 5.5" (19cm x 14cm)
- The sample being imaged must be placed in the centre of the tray with the tray background (Black, Blue or Green) visible on each side.
- The "top crust" must either be towards the top of the image or towards the right and the orientation arrow must align with this.
- Adjust the tray level to ensure the slice surface is at the correct level to be analysed.

Sample size / preparation / Orientation

- Field of view



Sample tray must be visible on all sides

Orientation



Arrow points towards to surface of sample

CONVERTING THE IMAGE INTO DATA

The process followed to convert a digital image into Objective data

- Slice is identified. Small projections are removed, crumbs are ignored.
- Slice size and shape are measured. (Area, height, breadth, concavity...)
- Cells and cell walls are segmented. (Area of cells, brightness, cell contrast, cell wall thickness...)
- Individual cells are measured. In the Advanced Edition, measurements for each cell can be output (Area, position, elongation, volume).
- Size statistics are calculated. (Cell diameter...)
- Spatial distribution is calculated. (Curvature, net cell elongation, clustering...)

DATA PRESENTATION

C-Cell measurements are grouped as follows:

- **Dimensions**

Slice Area	Slice Height (max)
Slice Height (avg)	Breadth (Width)
Height/Breadth	Wrapper length

- **Colour / Brightness**

Slice brightness	Cell contrast
Crumb colour (L*a*b*)	Crust colour (L*a*b*)
Crust thickness characteristics	

- **Shape attributes**

Total concavity	Top concavity
Left concavity	Right concavity
Bottom concavity	Top left shoulder
Top right shoulder	Left break
Right break	Left break height
Right break height	Left break depth
Right break depth	Left break position
Right break position	Bottom left roundness
Bottom right roundness	

- **Cell information**

Number of cells	Number of holes
Area of cells	Area of holes
Cell diameter	Cell volume
Coarse cell volume	Volume of holes
Cell volume (map)	Cell vol range (map)
Relative vol range (map)	Coarse / Fine clustering
Wall thickness	Non-uniformity

- **Cell elongation and orientation**

Average cell elongation	Net cell elongation
Cell angle to vertical	Cell alignment
Vertical elongation	Degree of circulation
Circulation horizontal offset	Circulation vert offset
Curvature	

ADDITIONAL DATA (Optional features)

- **Bread score**
 - Bespoke calibration – specific to product type

- **Inclusions / External features**

Number of features	Area occupied
Colour (L*a*b*)	XY location of each feature
Uniformity of distribution over surface	

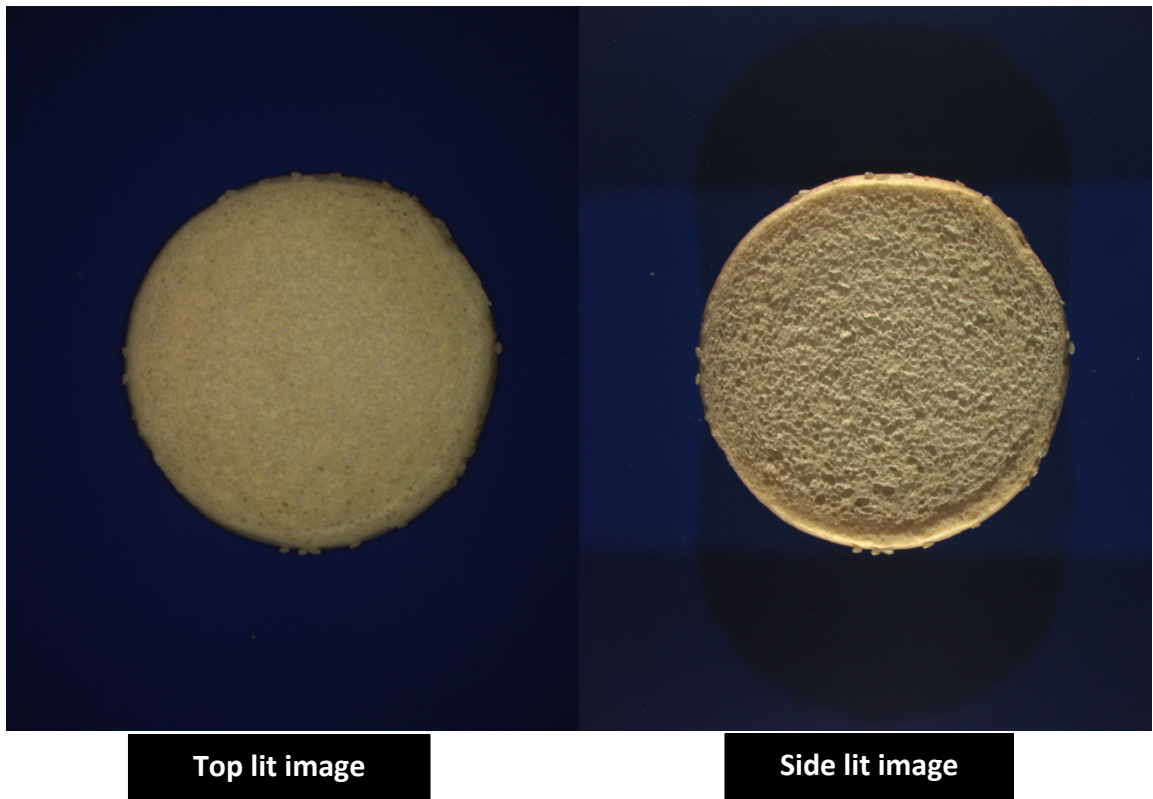
IMAGES CREATED IN SOFTWARE

MONOCHROMER CAMERA



The unprocessed raw image taken by the monochrome camera

COLOUR CAMERA



The unprocessed side lit colour images taken by the colour camera

COLOUR CAMERA

Side lit colour to monochrome conversion



The side lit colour image is converted to a monochrome format to allow data processing by monochrome algorithms.

Colour camera

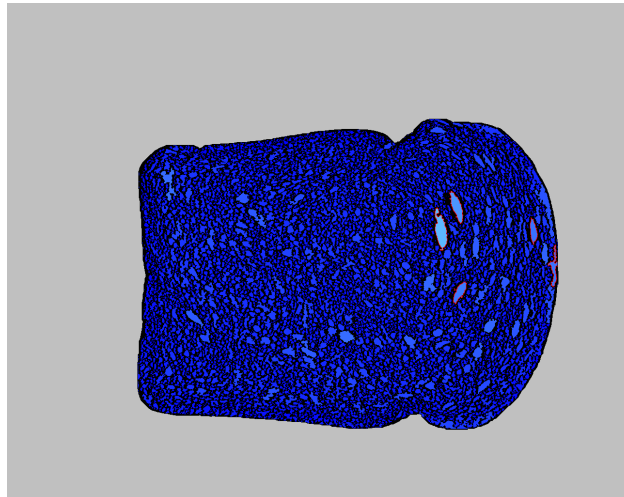
Top lit images



Top lit colour images used to determine crumb and crust colour parameters.

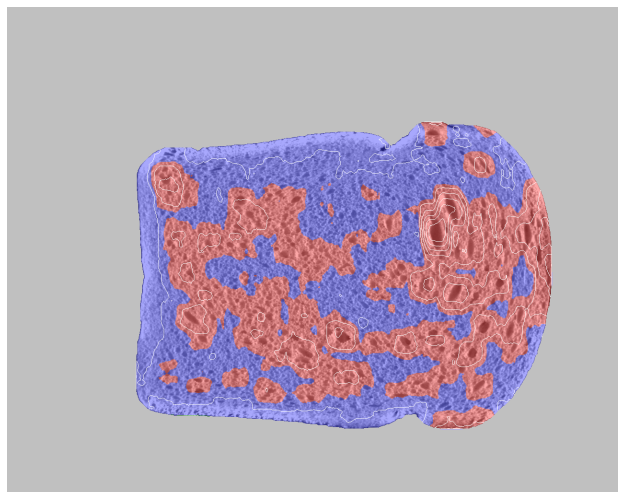
PROCESSED IMAGES

Cell image



Cells and cell walls are identified, Cell walls are colour coded black and the cells are blue. The darker the blue colour, the smaller the cell diameter. The smallest cell we can measure is 0.14mm. Cell size increases as the shading gets lighter. Any large holes are circled in red.

Volume map image



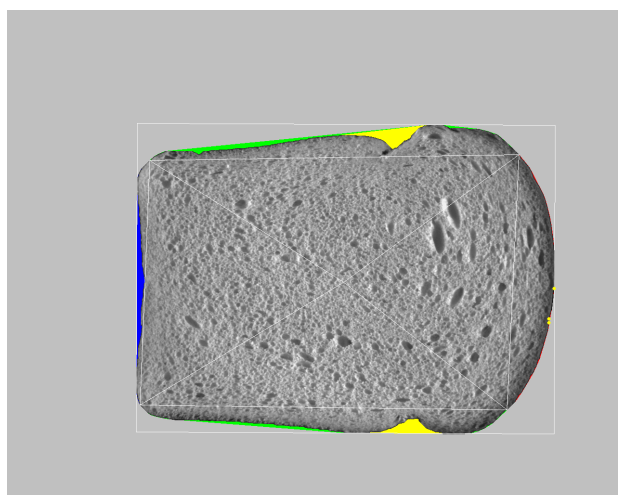
The Volume map image divides the cells within the image into coarse and fine regions of cell texture, using the median value to separate each section.

Brightness image



The brightness image shows the average grey level of all of the pixels in the slice. Crumb structure and bran content influence this measurement. In most cases, a finer crumb structure will give a brighter slice brightness when comparing an open structured bread (such as baguette) and a fine structured sandwich bread made with the same flour. The image shown is adjusted to constant brightness to allow comparison of different samples.

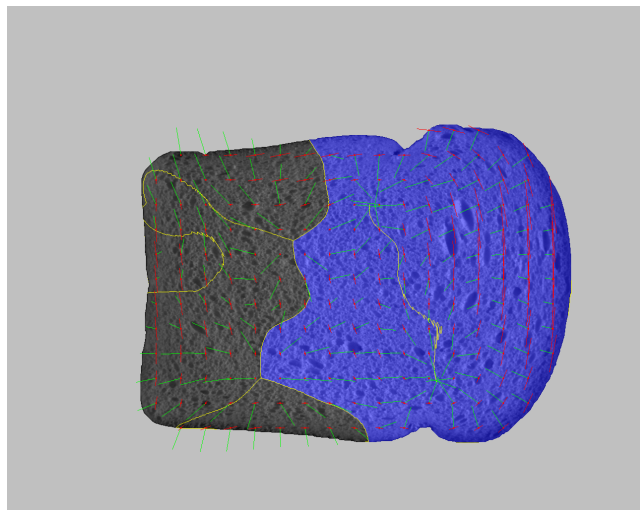
Shape image



The Shape information is of primary importance to tinned (and lidded) loaves that will be placed in packaging prior to sale. The image shows a view of the slice with particular shape features shown in colour. A white rectangular box is shown enclosing the slice. Measurements of cell position (available in the Advanced Edition) are made within the coordinate system defined by this box, and measurements of slice Height (max) and Breadth are given by the dimensions of

the box. The corners of the slice are also identified and connected by white lines to each other and to the centre of the slice. Concavities in the sides of the slice are shown in blue for the bottom, green for the sides and red for the top. Where oven spring is detected, this is shown in yellow. The points used for measuring the slice height are marked as yellow points on the top edge. High points are identified at either side of the top edge and the lowest point between them is also marked. Where there is no clear dip in the top, some of these points may coincide and it may not be possible to see three distinct points

Elongation image



The elongation image characterises key properties introduced into the dough during the moulding / sheeting process. It represents the orientation and elongation of cells. Short red lines are drawn parallel to the long axis of cells at each point in the slice. The length of the lines indicates the degree of elongation of the cells. For regions that show some curvature, green lines are also

drawn that point towards the centre of the curvature. The length of the green lines indicates the degree of local curvature. Yellow lines are also shown that divide regions of the slice that show curvature in opposite directions. Regions of the slice that show a complete 360 degree rotational structure are shaded in bright blue. Those that show a rotational structure that turns through 180 degrees are shaded in pale blue. Those showing no full rotation are left in grey.